



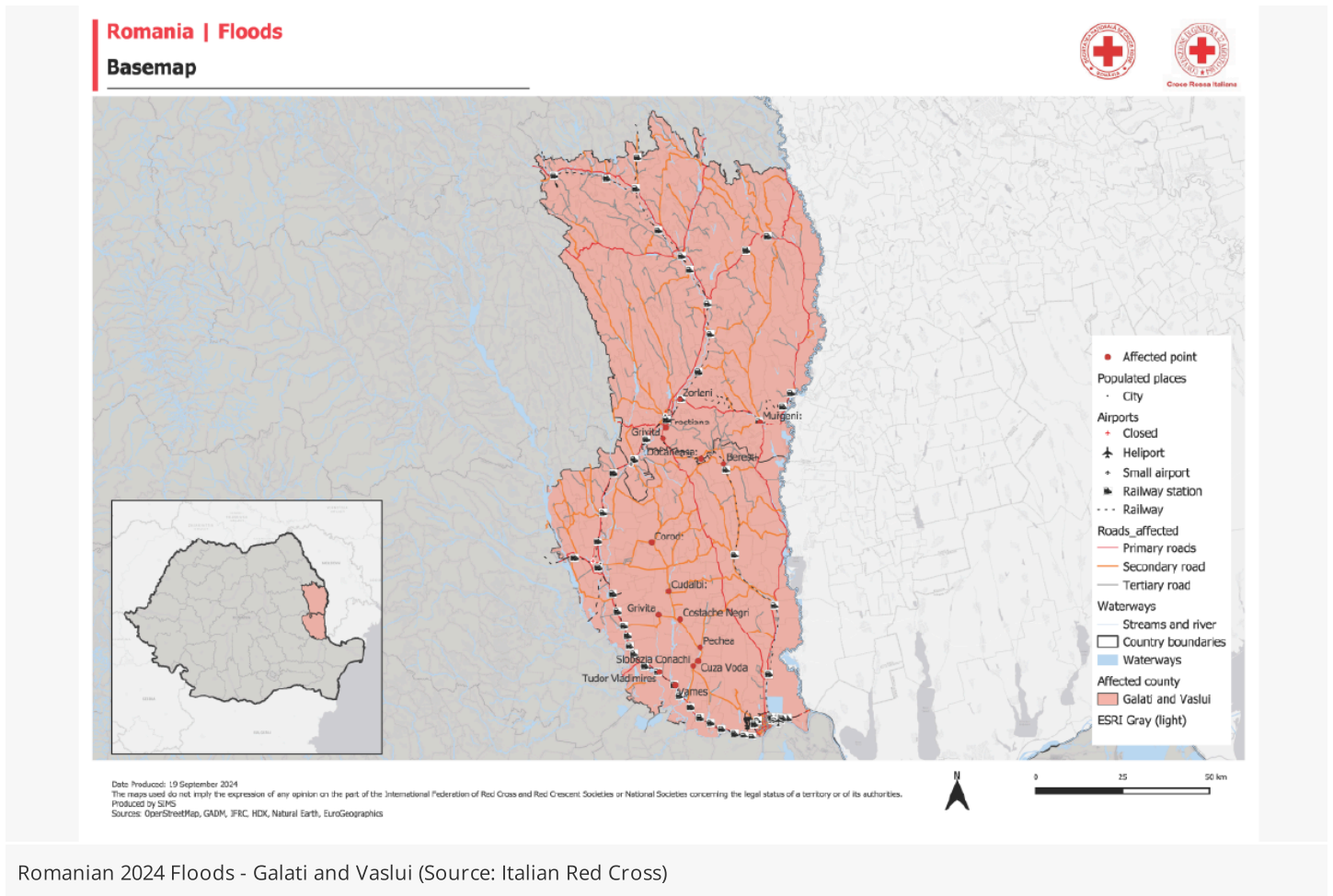
Romanian Red Cross Volunteers distributing relief and food items on 15 September 2024 (Source: Romanian Red Cross)

Appeal: MDRRO006	Country: Romania	Hazard: Flood	Type of DREF: Response
Crisis Category: Yellow	Event Onset: Sudden	DREF Allocation: CHF 465,192	
Glide Number: FL-2024-000169-AUT	People Affected: 15,000 people	People Targeted: 5,000 people	
Operation Start Date: 30-09-2024	Operation Timeframe: 3 months	Operation End Date: 31-12-2024	DREF Published: 01-10-2024
Targeted Areas: Galati, Vaslui			

Description of the Event

Date of event

14-09-2024



What happened, where and when?

The 2024 Central European floods in Romania were triggered by Storm Boris, which brought torrential rains to the counties of Galați and Vaslui on 14 September. In less than 24 hours, over 150 mm of rainfall per square meter caused flash floods in several areas.

Galați was the hardest hit, with floodwaters reaching depths of 1.5 to 2 meters in the localities of Cudalbi, Cuza-Vodă, Pechea, Slobozia-Conachi, Tudor Vladimirescu, and Costache Negri. In Vaslui, the southern localities of Zorleni, Grivița, and Trestiana were most affected.

The floods caused widespread destruction, severely damaging infrastructure such as roads, bridges, power systems, and schools. More than 6,000 homes were either damaged or destroyed across both counties. Around 400 people remain displaced and are currently being sheltered in temporary housing provided by authorities. Tragically, seven deaths have been confirmed.



RoRC - IFRC Rapid Assessment Team. (Source: Romanian Red Cross)



2024 Romania Flood aftermath. (Source: Romanian Red Cross)

Scope and Scale

Starting from 14 September 2024, extreme flooding struck Galați and Vaslui counties due to unprecedented rainfall exceeding predictions by far: Vaslui recorded 165 mm of rain, Galați saw 148 mm within 24 hours, compared to the 60-80 mm predicted by the meteorological service, providing the basis for preparations of competent authorities. Factual warning and measures have therefore become effective with a short lead time of 24 hours only.

Communities in low-lying rural areas like Pechea, Costache Negri, and Cuza Vodă were hit hardest. Over 300 kilometers of roads were destroyed or blocked by landslides, isolating entire communities and delaying rescue efforts. Key routes became impassable, and bridges were washed away, further cutting off access. Power grids and water systems were heavily damaged, leaving many without electricity or clean water.

Although Galați had experienced significant flooding in 2013, which affected about 8,000 people and 3,000 households, a flood of this scale was unexpected. Vaslui, meanwhile, had never faced such extensive flooding.

The sheer magnitude of the disaster overwhelmed local preparedness efforts, including newly implemented contingency plans by the Red Cross branches. The extreme nature of the event exceeded the capacity of responders, especially in remote areas.

Although floodwaters have receded, immediate needs for food, essential supplies, and services persist. The restoration of critical infrastructure, such as power and water supplies, roads, bridges, and schools, will take months or even years. It will take weeks to months for damaged homes to become habitable again, and the reconstruction of destroyed houses or relocation of affected people to safer areas will take even longer. Many rural residents have lost livestock and crops, depriving them of their main sources of income.

Vulnerable groups, including the elderly, large families, people with disabilities, and those who have lost farming livelihoods, are especially at risk during both the response and recovery phases.

Source Information

Source Name	Source Link
1. National Institute of Hydrology and Water Management report on 14.09.2024	https://www.hidro.ro/bulletin/situatia-hidrologica-pe-rauri-si-dunare-in-data-de-14-09-2024-ora-07-00/
2. General Inspectorate for Emergency Situations - Measures for affected population	https://igsu.ro/Media/Stire/5138
3. General Inspectorate for Emergency Situations - Latest hidrological effects	https://igsu.ro/Media/Stire/5141



Previous Operations

Has a similar event affected the same area(s) in the last 3 years?	No
Did it affect the same population group?	-
Did the National Society respond?	-
Did the National Society request funding form DREF for that event(s)	-
If yes, please specify which operation	-
If you have answered yes to all questions above, justify why the use of DREF for a recurrent event, or how this event should not be considered recurrent:	
-	

Current National Society Actions

Start date of National Society actions

14-09-2024

Livelihoods And Basic Needs	In response to the basic needs of those affected by the floods, the National Society acted swiftly to provide food assistance. From the first day of the emergency, the Galați and Vaslui branches distributed food products with essential items such as cooking oil, rice, canned meat, and waffles. On 18 September, the Romanian Red Cross Logistics and Disaster Response departments facilitated the delivery of two trucks of in-kind humanitarian aid, further supporting the affected communities in meeting their immediate nutritional and shelter needs with food items, sleeping bags, blankets, and rubber boots. In total, in-kind assistance to address basic needs has been distributed to 1,791 households in Galați and 431 households in Vaslui.
Water, Sanitation And Hygiene	From the onset of the emergency, the NS rapidly responded to WASH needs, ensuring access to clean drinking water and hygiene products. Bottled water distribution began on day one, with over 2,280 households in Galați and 330 households in Vaslui being assisted with clean water. This was made possible through a combination of branch emergency funds, contributions from other branches, and donations from private companies. Additionally, hygiene products such as soap, wet wipes and toothpaste were distributed to over 1,391 households in Galați and 192 in Vaslui, addressing immediate sanitation needs.
National Society Readiness	The RoRC Headquarters has established a 6-month Operational Plan to ensure efficient, harmonized assistance, prioritizing the most vulnerable populations while reinforcing the capacity of affected branches. Alongside scaling up DREF-supported relief and winter assistance, RoRC is integrating MHPSS into the response. This includes an MHPSS helpline to provide emotional support, particularly for those in rural areas where stigma hinders in-person help and for people with family in affected regions. The helpline will also share information on preventing water-borne diseases, raising awareness and promoting public health. MHPSS, First Aid, and WASH components will be funded by RoRC, while broader intervention efforts will be supported by domestic donors and in-kind contributions.



Assessment	<p>The branches in Galați and Vaslui have been continuously assessing the situation from the onset, with staff and volunteers regularly monitoring conditions in the field and reporting back to HQ.</p> <p>To further support these activities, the IFRC and RoRC formed two rapid assessment teams which deployed to Vaslui and Galați counties (20 – 21 September), enhancing initial assessment information provided by branches and the authorities.</p>
Resource Mobilization	<p>At a national level, the RoRC, through its Fundraising and Communications departments, launched a fundraising campaign on the 14 September afternoon. By 23 September, about, EUR 100,000 were fundraised by the RoRC, both from individual giving and corporate donations.</p>
Activation Of Contingency Plans	<p>The recently established contingency plans for the RoRC branches improved their emergency response. County level risk assessments had identified floods as the top threat in Galați and the second in Vaslui, after drought. Most of the intervention steps of the local plans were followed, guiding both branches in implementing activities and ensuring communication with the Emergency Operations Centre.</p>
National Society EOC	<p>The Romanian Red Cross Emergency Operations Centre, established in March 2024, played a key role in coordinating the flood emergency response. It managed RoRC and IFRC activities while gathering critical information from national authorities. From 14 September, the EOC was in exchange with the national authorities in charge of relief efforts, and prioritised response to the identified needs of the affected population. This coordination ensured the RoRC alignment with authority efforts, enhancing the effectiveness of the response in affected areas.</p>

IFRC Network Actions Related To The Current Event

Secretariat	<p>The IFRC has an established presence in Romania’s capital, primarily due to its involvement in the “Ukraine and Impacted Countries” Operation. The IFRC’s in-country delegates are covering critical areas such as NSD, PMER, Admin, Finance, MHPSS, and DM.</p> <p>The presence has enabled the organization to rapidly scale up its support for the ongoing flood crisis. For the emergency, an Operations Coordinator, specializing in disaster management, has been deployed to assist with the rapid assessment, reinforcing the efforts of the Romanian Red Cross and providing vital technical expertise. The IFRC has been integral in coordinating the immediate response, including assessments, resource mobilization, and field operations.</p>
Participating National Societies	<p>Swedish Red Cross is present in the country and has offered financial support.</p> <p>French, Italian and British Red Cross NS are also present in the country, currently considering their capabilities to contribute to responding to the emergency.</p>

ICRC Actions Related To The Current Event

The ICRC is present in country but has not been actively involved in this emergency response so far. The ICRC can offer support with RFL services as required (with no respective needs identified at present)

Other Actors Actions Related To The Current Event

Government has requested international	No
---	----



assistance	
National authorities	<p>The national and local authorities mobilized substantial resources in response to the flood disaster. In Galați, local authorities were active from the onset of the emergency, evacuating residents, draining excess water, and deploying over 1,000 firefighters to assist with rescue and recovery efforts. Six temporary camps, each with a capacity of 200 people, were established in Galați, Vaslui, and Iași counties to shelter people displaced by the floods.</p> <p>The Ministry of Internal Affairs, through the Inspectorate of Emergency Situations, is coordinating with the Ministry of National Defence. Specialized teams were also sent to assess damaged dikes, while neighbouring counties aided in the hardest-hit areas. The State Inspectorate in Constructions deployed experts to assess all affected buildings and houses.</p> <p>National authorities focused on restoring critical infrastructure, setting up shelter capacity, evacuating water, cleaning homes, clearing access routes, recovering vehicles, and removing animal carcasses.</p> <p>Also, immediate relief assistance of 2,000 EUR per household has been approved from national reserves to assist the rehabilitation of affected households.</p>
UN or other actors	<p>Several NGOs, including Habitat for Humanity, Save the Children, ADRA, and smaller humanitarian NGOs, have been involved in the emergency response. Their contributions have primarily focused on localized support and offering basic assistance to affected communities.</p>

Are there major coordination mechanism in place?

Coordination mechanisms at both local and national levels were activated through the County Emergency Committees, in which the local branches of the RoRC are active members. These committees officially requested the intervention of the RoRC branches and coordinated with local municipalities to identify families in need of assistance.

In accordance with Law 557/2016, the RoRC operates in a secondary, supportive capacity. This legislative framework positions the RoRC to assist and collaborate closely with lead authorities, such as the Inspectorate for Emergency Situations (IGSU), which is the primary agency responsible for managing disaster interventions.

Needs (Gaps) Identified



Shelter Housing And Settlements

The flooding caused by Storm Boris has severely damaged homes and infrastructure, displacing many families and creating an urgent need for essential shelter and winter relief items. Around 6,000 houses have been partially or completely destroyed, leaving them uninhabitable, either temporarily or permanently. Authorities have provided container shelters for those who lost their homes, with 213 people currently living in these temporary accommodations as of 23 September. The remaining displaced individuals are staying with family or friends.

Affected populations staying with hosts and those living in their own affected homes require blankets, mattresses, and other essential items to ensure basic comfort and warmth.



Livelihoods And Basic Needs

Support for livelihoods and basic needs is critical, as the affected communities are predominantly agricultural. The floods have destroyed crops and livestock, which many families rely on for their primary source of income. Without the means to replace these losses, affected households face severe financial hardship.

Beyond the immediate loss of income, the destruction of farmland, tools, and equipment further hampers their ability to recover in the long term. Additionally, farmers are facing challenges in preparing for the next planting season due to waterlogged fields and damaged



irrigation systems. Livelihood recovery will require the provision of seeds, farming tools, and livestock, along with financial assistance to restore agricultural productivity. In parallel, vocational training and alternative income-generating activities could help diversify income sources, making these communities more resilient to future disasters.

Immediate cash assistance and food security support will also be essential to meet basic needs until families can rebuild their livelihoods. Special attention should be given to vulnerable groups such as small-scale farmers, day laborers, and those already living in poverty, as they are particularly at risk of falling deeper into financial insecurity.



Water, Sanitation And Hygiene

The affected communities are facing significant health risks due to inadequate sanitation and waste management following the floods.

The flooding has severely disrupted sanitation systems, elevating the risk of disease outbreaks. To uphold hygiene standards in temporary accommodations, families need hygiene parcels that include essential items such as soap, sanitary products, and disinfectants. Maintaining personal hygiene is crucial in crowded temporary shelters to prevent the spread of infections and protect public health.

As floodwaters recede and debris is cleared, families will begin the process of cleaning and sanitizing their homes to make them livable again. To support this effort, cleaning supplies like disinfectants, mops, and buckets are necessary for restoring safe living conditions.

In summary, immediate attention to WASH needs is vital to safeguard health and ensure a safe environment as communities begin to recover.

Any identified gaps/limitations in the assessment

The initial branch level and rapid HQ/IFRC assessment provided a snapshot on the situation and will require additional primary and secondary data to provide comprehensive information on the situation, specifically on recovery needs and efforts of actors. RoRC keeps coordinating with concerned authorities to ensure information exchange.

[Assessment Report](#)

Operational Strategy

Overall objective of the operation

This DREF aims to support 5,000 people in need affected by the recent flood disaster, by providing immediate humanitarian aid, through the implementation of actions under shelter, livelihoods and WASH in the counties of Galați and Vaslui, for a period of three months.

Operation strategy rationale

To address the needs of the targeted population, the Romanian Red Cross (RoRC) plans to implement a series of coordinated activities designed to provide immediate relief and support the recovery of communities affected by the floods. Central to this strategy is the engagement of local communities in the recovery process and a commitment to continuous accountability, ensuring that relief efforts are tailored to their specific needs. Some of the key activities include delivering essential aid such as clean drinking water, food, and shelter as well as repairing infrastructure and restoring vital services. It is important to note that not all of these activities are funded through the DREF; some are supported by other funding sources.

This DREF intervention specifically aims to complement the relief efforts of local authorities, reinforcing the RoRC's auxiliary role and maximizing the implementation capacity of the National Society. Additionally, it provides a solid foundation for scaling up efforts with domestic funding.

The rationale for this approach encompasses several key elements including the distribution of food, and hygiene products to individuals and families who have been evacuated or are without access to basic items, at initial stage. This is followed by providing cleaning products, and subsequently wood-fuelled stoves/heaters alongside firewood to targeted groups, both for cooking and heating in the winter period, as detailed below:

SHELTER:



Through this line of intervention, at least 5,000 people will be reached.

As winter approaches in Romania, the demand for heating will increase, leading to higher costs for both wood and other heating resources. The nature of these houses exacerbates energy inefficiency, necessitating more fuel to maintain adequate indoor temperatures. Consequently, the combination of inadequate insulation, heightened heating demands, and rising fuel prices contributes to the overall increase in heating costs.

The shelter intervention integrates the distribution of basic needs items (blankets, rubber boots, bedding and sleeping bags) and solid fuel stoves/heaters and firewood in preparation of the winter period - which have been identified as priority needs in the RoRC / IFRC rapid assessment conducted.

All firewood will be purchased from authorized vendors, which have been certified by the authorities regarding the provenance of the wood.

Furthermore, the heating-related items will be acquired only after the initial aftermath has passed, ensuring that the individual storage areas will be adequate.

In kind assistance has been prioritized over CVA modalities due to accessibility (no adequate suppliers are situated in the rural areas affected) and the limited NS capacity to implement CVA programming.

LIVELIHOODS:

Through this line of intervention, at least 5,000 people will be reached.

The livelihoods intervention integrates distribution of durable food items, such as canned fish and canned meat, and non-perishable items.

WATER, SANITATION AND HYGIENE (WASH):

Through this line of intervention, at least 2,000 people will be reached.

The WASH intervention integrates the distribution of hygiene products, such as shampoo, soap, toothpaste and toothbrushes, and cleaning materials to support with cleaning households in affected areas.

Logistical efforts will include setting up a temporary warehouse and respective staff in Galați and Vaslui for the storage and distribution of aid.

Targeting Strategy

Who will be targeted through this operation?

The total targeted population will include 5,000 people.

The operation prioritizes vulnerable groups in the affected villages in the Counties of Galati and Vaslui, including:

- elderly persons (60+)
- single women
- households with one or more persons with disabilities
- single-parent households
- households with three or more children.

Targeted population require to be affected by the floods, with focus on people displaced from their homes, individuals whose properties were severely damaged or destroyed, and those experiencing major disruptions to their livelihoods.

Additionally, people experiencing loss of income due to damaged agricultural land or businesses, and those in temporary shelters with limited access to clean water, electricity, or healthcare will be prioritized for assistance.

The disaggregation estimations for the targeted population were made using the demographic distributions in the respective counties.



Explain the selection criteria for the targeted population

The selection criteria will prioritize those in the most affected areas, particularly in low-lying regions near the rivers.

Information will be collected by the branch when they will assess the need of each individual, and when the volunteers will be engaged in distribution efforts.

Affected population will be prioritized based the criteria above.

Information will be cross-checked with national ID's and if necessary, through the authorities.

Total Targeted Population

Women	2,040	Rural	100%
Girls (under 18)	440	Urban	0%
Men	2,070	People with disabilities (estimated)	10%
Boys (under 18)	450		
Total targeted population	5,000		

Risk and Security Considerations

Please indicate about potential operation risk for this operations and mitigation actions

Risk	Mitigation action
Limited Human Resources Insufficient personnel to manage distributions and warehousing could hinder timely and effective operations.	Allocate adequate financial resources to cover personnel costs, ensuring sufficient human resource is in place to manage logistics and distribution.
Coordination and Communication Gaps Gaps in communication and coordination with local authorities or communities may delay interventions or lead to gaps in service delivery.	Ensure contact information from the authorities are shared, to ensure timely communication. Establish clear lines of communication with local stakeholders, including integration in coordination for, regular exchange and information sharing, thereby ensuring the coordination of efforts.
Logistical Challenges (transportation - warehousing) Existing capacity for storing and transporting essential goods like food, water, and hygiene materials is overtaxed and could lead to delays in aid distribution.	Temporarily Increase storage capacity by renting suitable warehouses. Deploy transport vehicles from neighbouring branches or headquarters to compensate for the increase of logistical demand.
Location Risk Flooding due to existing or future weather conditions.	All locations for temporary warehouses are being selected and have taken into account the future risk for flooding and will be leased in non-risk areas.
Injuries of field personnel There is a risk of injury for responding staff and volunteers due to weather-related events and malfunctioning infrastructure (traffic) in the operational areas.	The RoRC will take precautionary measures, including monitoring of weather forecast and related early warning, provision of Personal Protective Equipment (PPE), fixed check-ins with field teams, and contingency planning (see section on security and safety for details)



Please indicate any security and safety concerns for this operation

Throughout the entire emergency response operation, the RoRC will ensure that all staff members and volunteers are provided with appropriate PPE and each delegation will be contacted at fixed intervals by the EOC for safety and reporting reasons. Emergency response teams will be constantly informed of any areas where the risks of flooding, landslides or other hazards remain high. Alternative routes and evacuation plans will be developed and shared with responders in due time to minimize risks.

Has the child safeguarding risk analysis assessment been completed?

No

Planned Intervention



Shelter Housing And Settlements

Budget: CHF 276,900

Targeted Persons: 5,000

Indicators

Title	Target
# of people receiving shelter assistance	5,000

Priority Actions

- Procurement for replenishment of RoRC pre-existing emergency stocks of blankets (5,000), rubber boots (600), bedding (500) and sleeping bags (170), which have been distributed as of 23 September.
- Procurement and distribution of materials needed for heating, namely wood for heating, solid fuel stoves/heaters, shovels, rubber boots (400), sleeping bags (830).
- Distribution modalities for stoves/heaters and firewood will be defined in detail at a later stage, foreseeing a mixed distribution method (delivery to houses, pick-up at hubs), based on accessibility and mobility of the target household members.

All costs related to the distribution of relief items are going to be covered by the Romanian Red Cross own funding (fuel, vehicle insurance, accommodation costs-if necessary, per diem).



Livelihoods And Basic Needs

Budget: CHF 42,600

Targeted Persons: 5,000

Indicators

Title	Target
# of people receiving food assistance	5,000

Priority Actions

- Procurement for replenishment of NS pre-existing emergency stocks of durable food items, such as canned fish and canned meat, that have been distributed to people and households by 23 September.
- Procurement and distribution of non-perishable food items.



Water, Sanitation And Hygiene

Budget: CHF 94,785

Targeted Persons: 2,000

Indicators

Title	Target
# of people receiving WASH assistance	2,000

Priority Actions

- Procurement for replenishment of NS pre-existing emergency stocks of hygiene products that have been distributed by 23 September, including shampoo (2,000), soap (2,000), toothpaste (1,000), toothbrushes (1,000) and detergent (500).
- Procurement and distribution of shampoo (1,000), soap (2,000), surface disinfectant, cleaner, cleaning materials and dignity kits (per IFRC standards) necessary for houses that are currently uninhabitable but structurally sound.



Secretariat Services

Budget: CHF 14,058

Targeted Persons: -

Indicators

Title	Target
# of surge personnel deployed to provide support in the operation	1

Priority Actions

The IFRC aims to install a roving Operations coordination function (from internal ranks or through the Rapid Response mechanism) to ensure coherent implementation of all DREFs in the context of the CEE floods 2024. Any respective budget unspent will be used for operational efforts of the respective NS.



National Society Strengthening

Budget: CHF 36,849

Targeted Persons: 100

Indicators

Title	Target
# of volunteers involved in the operation	100

Priority Actions

Enhancing storage capacities locally by renting warehouse in Galați or Vaslui counties and employing 4 warehouse personnel (drivers and operators) to sustain further aid distribution efforts.

Additional warehousing and logistic staff capacity will also be utilized to implement the wider RORC Operational Plan (as outline above),



going beyond the DREF activities.

Insurance of volunteers involved in the operation, who joined RoRC in 2024 (and therefore not insured through the RoRC annual insurance mechanism; total of 100 volunteers) will be provided through the IFRC insurance mechanism.

About Support Services

How many staff and volunteers will be involved in this operation. Briefly describe their role.

About 30 staff and at least 200 volunteers from multiple RoRC branches and headquarters will be involved in the duration of the operation. Some volunteers already have insurance. If needed, additional insurance will be setup from the DREF budget.

Their roles will vary depending on the experience and location: local staff and volunteers will be involved in distributions, first point of contact with affected population, and organising incoming aid in the field, while staff and volunteers in other branches will serve as support staff to the branches most involved.

Headquarters staff will assist the local branches with logistics, organising and management support, both in the field and remote.

If there is procurement, will it be done by National Society or IFRC?

All procurements (both for replenishment of existing stocks, and for new acquisitions) will be carried out by the RoRC Procurement department as per internal logistics procedures, and in line with IFRC procurement procedures and local law.

Warehousing and distribution costs, both for items already distributed as well those still to be procured / distributed, have been and will be covered by RoRC, utilizing the NS' own funds.

How will this operation be monitored?

The operation will be monitored by the IFRC office in Romania, based in Bucharest, together with the Romanian Red Cross. Regular visits in the field will be taken into consideration if necessary and will be organised together with the Romanian Red Cross headquarters and the local branch, as well as monthly indicator collecting forms that will be followed by narrative reports of the operation.

A Lessons Learnt Workshop will be conducted towards the final stage of the operation, allowing for gathering operational learning and improving future response efforts.

Please briefly explain the National Societies communication strategy for this operation

The RoRC communication department will handle any outgoing communication towards the public, as well as act as a main point of contact for all incoming public inquiries.

Budget Overview



DREF OPERATION

MDRCCxxx - Romanian National Red Cross Society Romania: Flood

Operating Budget

Planned Operations	414.285
Shelter and Basic Household Items	276.900
Livelihoods	42.600
Multi-purpose Cash	0
Health	0
Water, Sanitation & Hygiene	94.785
Protection, Gender and Inclusion	0
Education	0
Migration	0
Risk Reduction, Climate Adaptation and Recovery	0
Community Engagement and Accountability	0
Environmental Sustainability	0
Enabling Approaches	50.907
Coordination and Partnerships	0
Secretariat Services	14.058
National Society Strengthening	36.849
TOTAL BUDGET	465.192

all amounts in Swiss Francs (CHF)



Contact Information

For further information, specifically related to this operation please contact:

National Society contact: Daniel Modoacă, Disaster Manager, daniel.modoaca@crucearosie.ro, +40 748 238 018

IFRC Appeal Manager: Christie Edwards, Head of Delegation, christie.edwards@ifrc.org

IFRC Project Manager: Anna Cerutti, Coordinator, Programs, anna.cerutti@ifrc.org

IFRC focal point for the emergency: Aleksandar Panic, Coordinator, Operations, aleksandar.panic@ifrc.org

Media Contact: Dan Brumar, Communications Manager, dan.brumar@crucearosie.ro, +4 0720 574 232

[Click here for the reference](#)

